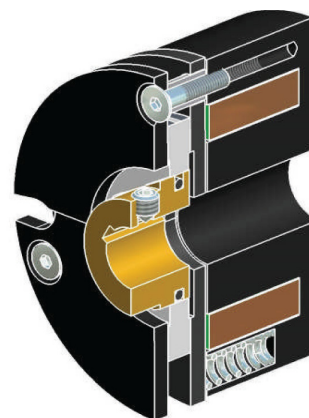
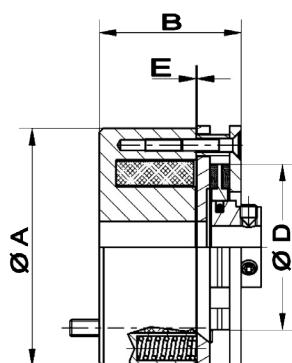
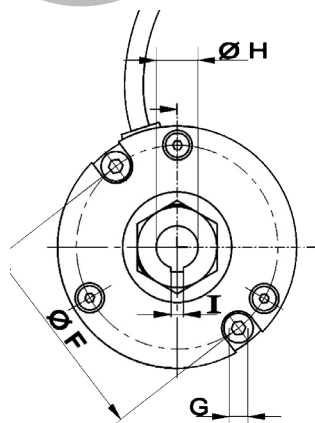


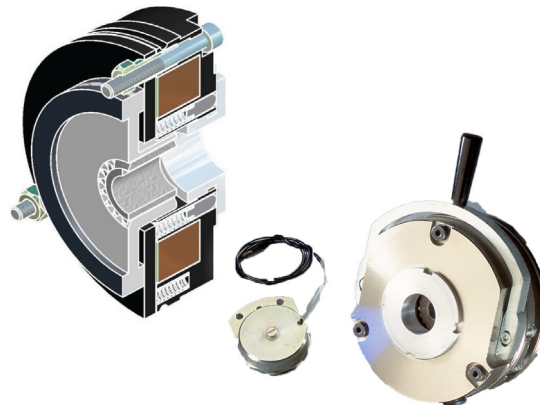
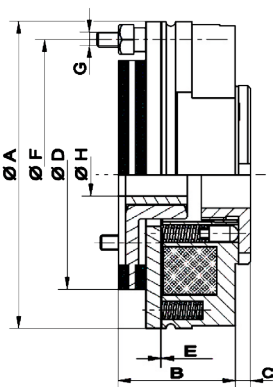
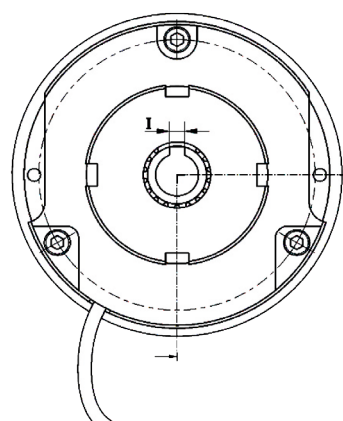


# BRAKE TYPE 56

## SPRING APPLIED BRAKES



Type	Size	A	B (mm)	C	D	E	F (mm)	G	H min-max H7	I min-max	Torque Nm	Power W	Speed	Fastening Torque Screw (Nm)	Weight (Kg)
FMP	050	50.5	33	-	39	0.10	46	3xM3	6/10	2/4	0.5	14	3000	-	0.5
FMP	056	57	33.5	-	39	0.10	48	2xM4	6/10	2/4	2	14	3000	4	0.5
FMP	058	58	33	-	39	0.10	46.5	3xM3	6/10	2/4	1.5	14	3000	-	0.5



Type	Size	A (mm)	B (mm)	C (mm)	D (mm)	E (mm)	F (mm)	G	H min-max H7	I min-max	Torque Nm	Power W	Speed	Fastening Torque Screw (Nm)	Weight (Kg)
ECOR	083	84	34	4	59	0.30	72	3xM4	10/12	4	4.5	23	3000	4	0.9
FMPR	097	97	36	4	75	0.30	85	4xM5	12	4	10	45	3000	6	1.5
ECOR	102	102	39	4	76	0.30	90	3xM5	11/15	4/5	10	28	3000	6	1.5
ECOR	115	115	39	4	76	0.30	103	3xM5	11/15	4/5	15	28	3000	6	1.5
FMPR	117	117	47.5	5	90	0.30	102.5	4xM6	20	4	20	52	3000	8	3
ECOR	125	127	47	4	95	0.30	112	3xM6	12/24	4/8	20	31	3000	8	2.8
FMPR	145	145	52	5	113	0.30	132	3xM6	14/25	5/8	40	43	3000	8	4.6
FMPR	165	165	63	7	125	0.30	145	3xM8	20/30	6/8	75	56	3000	24	7.6
FMPR	185	188	69.5	7	150	0.30	170	3xM8	25/38	8/10	100	77	3000	24	10
FMPR	215	215	82.5	7	177	0.40	196	6xM8	25/45	8/14	200	103	1500	24	16
FMPR	250	255	93.5	10	204	0.40	230	6xM10	35/45	10/14	350	156	1500	50	20
FMPR	300	297	103.5	8	257	0.50	278	6xM10	40/60	12/18	500	230	1500	50	32