

Angular & parallel misalignment

High torsional stiffness

Good shock tolerance

Constant velocity

No Lubrication Required

Designed for anti-vibration

Setscrew & Clamp fixing

ANTI-VIBRATION



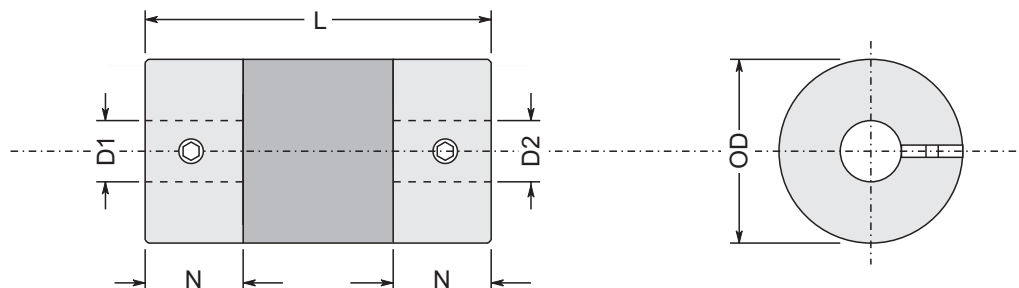
When fitting stepper motors, servomotors, gearboxes and encoders to machines, care must be taken to ensure all devices are coaxial, i.e. no angular or parallel misalignment. Failure to do so will place excessive loads on bearings and reduce life of the components. Using flexible couplings with some angular and parallel compliance will ensure this while maintaining constant velocity and low backlash.

The coupling consists of a silicon polymer that is cast between two aluminium hubs.

These couplings are specially designed to reduce vibration transmitted from motors to machine structures. They are available with both setscrew and clamp fixing.

SPECIFICATIONS

MODEL		BORE SIZES			DIMENSIONS			SCREW	OFFSETS		TORQUE MAXIMUM Nm
		D1	D2	D1, D2	OD	L	N		ANGULAR	PARALLEL	
		min.	min.	max.	mm	mm	mm	M	deg.	mm	
SETScrew FIXING	NPS4	4.4	5.8	10.0	19.1	26.5	6.5	M4	0.6	0.1	3.0
	NPS5	5.8	7.5	12.7	25.4	38.1	11.0	M5	1.0	0.15	5.7
	NPS6	5.8	9.8	19.0	31.8	57.2	16.0	M6	1.6	0.2	8.0
CLAMP FIXING	NPC4	4.4	5.8	10.0	19.1	26.5	6.5	M2.5	0.6	0.1	3.0
	NPC5	5.8	7.5	12.7	25.4	38.1	11.0	M4	1.0	0.15	5.7
	NPC6	5.8	9.8	16.0	31.8	57.2	16.0	M5	1.6	0.2	8.0



Continuous development may necessitate changes in specifications without notice.

AUTOMATED MOTION SYSTEMS PTY.LTD. - sales@automotsys.com.au - www.automotsys.com.au