

DIN 43700 PANEL MOUNTING INSTRUMENT CASES FOR PROCESS CONTROL & SCIENTIFIC INSTRUMENTS

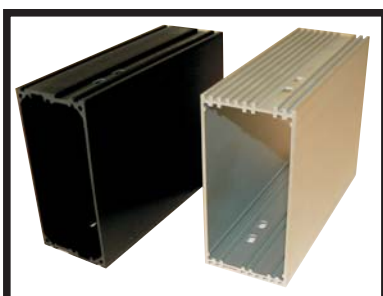
Ideal for meters, controllers, communications products and specialised supplies.



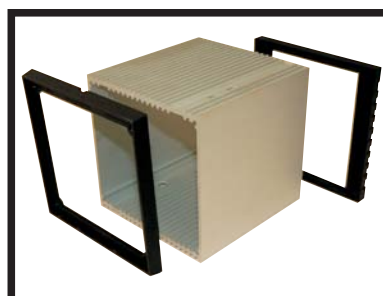
Internally slotted for printed circuit boards.



Brackets lock case firmly into control panel.



Extruded aluminium or plastic sections



Front and rear frames screw onto extrusion.

The CAMA range of enclosures is specifically designed for panel mounting instruments such as controllers, displays, annunciators, panel meters and measuring instruments. Eleven different sizes are available in both rectangular and square profiles, all conforming to the DIN 43700 standard.

The enclosure is constructed from an anodised aluminium alloy extruded section which is internally grooved to allow printed circuit boards to fit easily without requiring holding screws or pegs. Some small sizes are also available with black plastic extrusion for price sensitive applications.

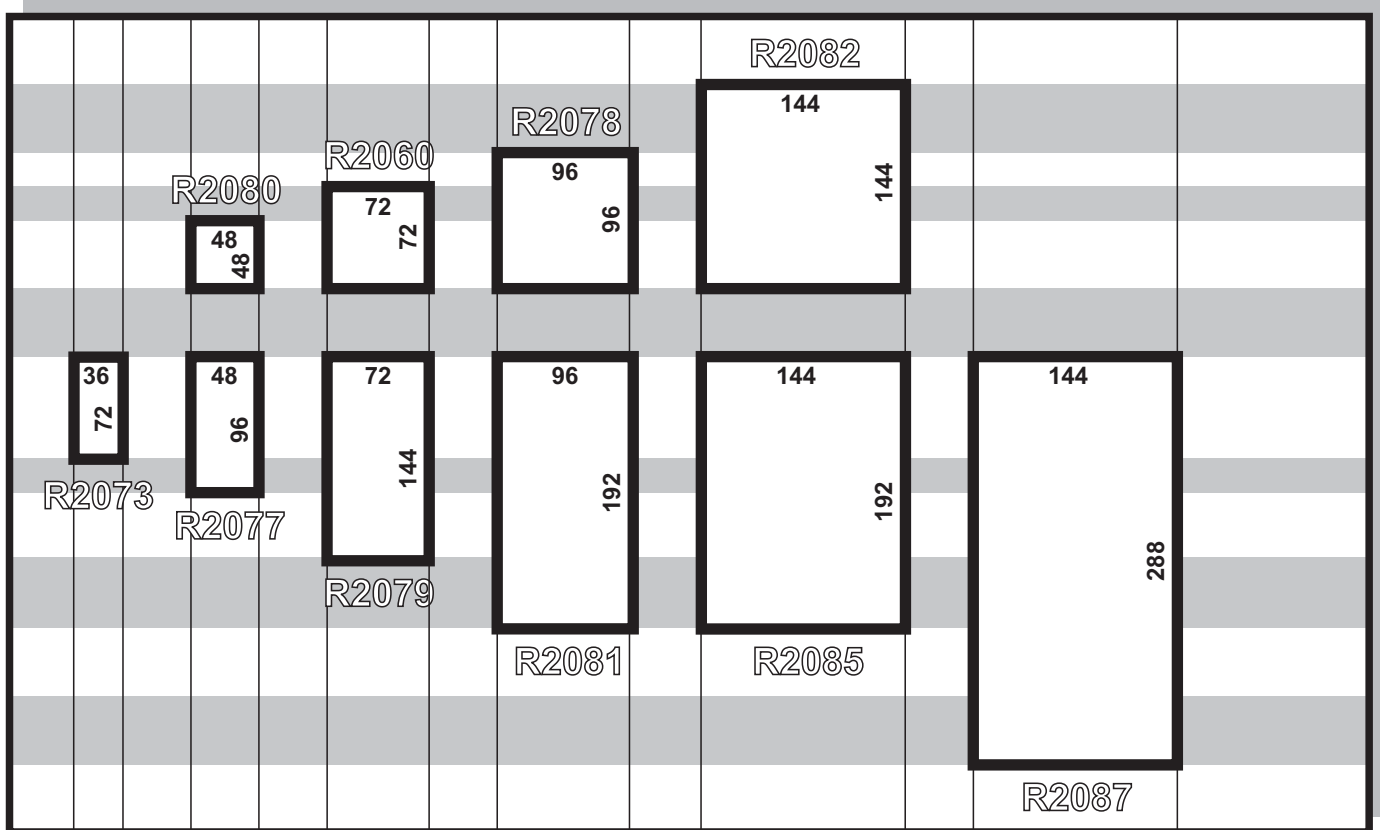
The extruded aluminium section provides heatsinking and some RF shielding. Black plastic moulded front and rear frames are screwed to the ends of the section and panels are clipped into these frames. The front panels may be either red perspex for LED displays or clear perspex for LCD displays. Screw brackets, which clip into holes on the side of the case, are used to hold the finished product in an aperture of a control panel.

Unique design of the front panel frame allows designers to fit large and complex printed front panels containing membrane switches and windows for LED indicators which are often required for microprocessor based controllers. The larger size cases have exceptional PCB packing density making them an economical alternative to the 19" Eurorack enclosures.

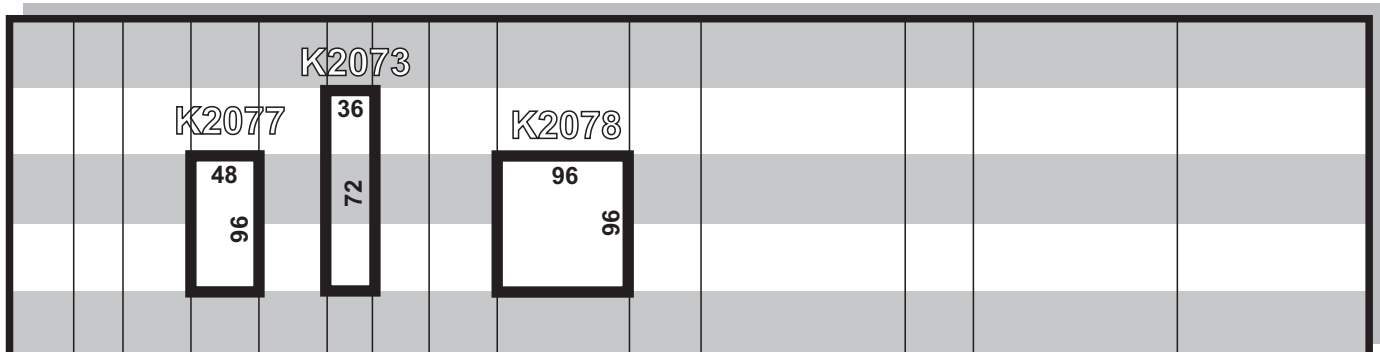
Flexible manufacture enables non standard extrusion lengths and anodised colored aluminium sections (red, green, black, gold, blue and yellow) to be supplied to give the product a customised appearance.

The CAMA enclosures are ideal for applications where a high quality, professional appearance enclosure is required for process control and instrumentation, scientific, specialised power supplies, medical or communications type products. They are also an economical alternative to designing and manufacturing dies for extruding custom made enclosures.

PANEL SIZES (Aluminium Cases)



PANEL SIZES (Plastic Cases)

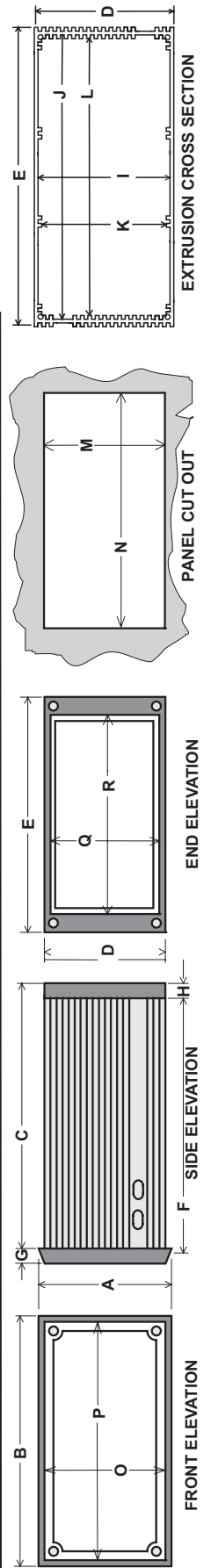


CAMA2 A.B.N.: 94 009 232 535

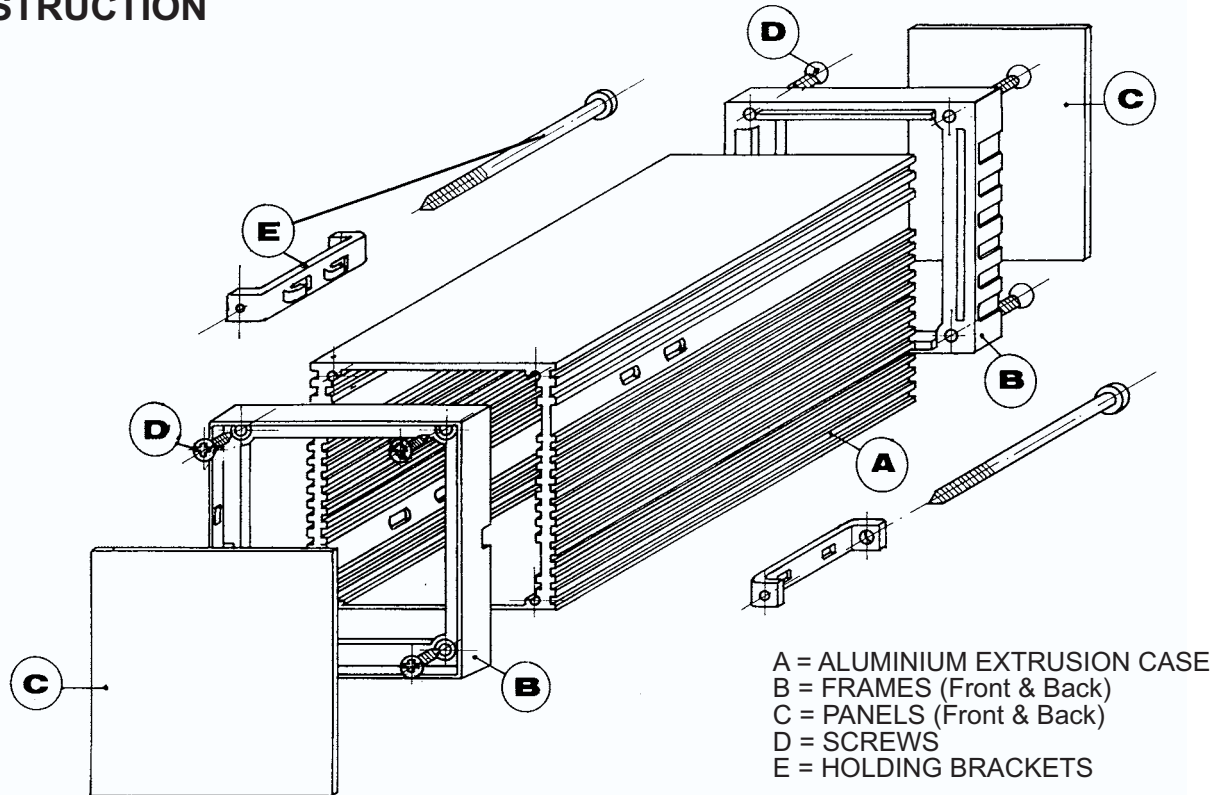
DIMENSIONS

Dimensions in mm.
 Tolerance = ±0.3mm.
 Special extrusion lengths and colors available on request.
 Cases larger than R2081 have four brackets instead of two for extra stability.
 Plastic cases have greater flexibility than aluminum ones and as a result, are only available in small sizes.
 Cases are supplied with front and rear frames, screws and brackets.
 Panels are optional depending on user's choice.
 All cases are supplied in the disassembled state.
 R2085 and R2087 are not single piece extrusions. These are assembled as sections.
 Provisional data only; dimensions subject to change without notice.
 * Indicates standard stock lines.
 Aluminum cases are normally supplied plain anodised, however, raw finish or colored anodising can be imported specially.
 Extra brackets, front/rear frames and screws are available. This enables extrusions to be cut in half to make two smaller cases from the one kit.

ENCLOSURE MODEL NUMBER	DIN HEIGHT	DIN WIDTH	DIN LENGTH	EXTRUSION HEIGHT	EXTRUSION WIDTH	EXTRUSION LENGTH	FRONT FRAME THICKNESS	REAR FRAME THICKNESS	MAX. INTERNAL HEIGHT	MAX. INTERNAL WIDTH	HEIGHT TRACK CLEARANCE	WIDTH TRACK CLEARANCE	RECOMMENDED CUT OUT HEIGHT	RECOMMENDED CUT OUT WIDTH	FRONT PANEL HEIGHT	FRONT PANEL WIDTH	REAR PANEL HEIGHT	REAR PANEL WIDTH	WEIGHT (kg) (with accessories)	WEIGHT (kg) (extrusion only)
	A	B	C	D	E	F	G	H	I	J	K	L	M	N	O	P	Q	R		
ALUMINIUM CASES																				
*R2080-125	48	48	125	45	45	119	8.5	8.0	42	39		36.5	45.6	45.6	45.0	42.5	30.0	0.125	0.104	
R2073-84	36	72	84	33	68	80	8.5	6.0	30	62		59	33.6	68.7	31.5	29.8	52.0	0.101	0.069	
R2073-109			109			105														
*R2077-130	48	96	130	44	92	124	8.5	8.0	40.6	85		82	45.6	92.8	44.0	41.0	74.0	0.210	0.175	
R2077-185			185			179													0.285	0.253
*R2060-120	72	72	120	67	67	114	8.5	8.0	63.6	59.8		57.2	68.7	68.7	67.9	64.8	49.5	0.215	0.162	
*R2060-145			145			139													0.255	0.210
*R2078-100	96	96	100	90	90	94	8.5	8.0	86	82		79	92.8	92.8	90.8	87.0	72.0	0.300	0.226	
*R2078-130			130			124													0.380	0.298
R2079-120	72	144	120	66	138	114	8.5	8.0	62	130	59	127	68.7	139.0	67.2	139.0	120.0	0.380	0.319	
*R2079-145			145			139													0.450	0.389
*R2081-130	96	192	130	90	186	124	8.5	8.0	86	178	83	175	92.8	187.1	90.9	187.3	168.5	0.525	0.452	
*R2081-185			185			179													0.700	0.627
R2082-120	144	144	120	138	138	114	8.8	8.0	134	130	131	127	139.0	139.0	139.4	135.5	116.6	0.655	0.545	
*R2082-145			145			139													0.775	0.665
R2085-130	144	192	130	138	182	124	16	13.8	134	175	129	168.9	139.0	187.1	138.0	186.0	160.0	0.950	0.745	
*R2085-185			185			179													1.110	1.075
R2087-130	144	288	130	138	282	124	16	13.8	134	275	129	269	139.0	283.3	138.0	282.0	260.0	1.320	0.970	
*R2087-185			185			179													1.540	1.400
*K2077-130	48	96	130	44	92	124	8.5	8.0	40	86.7		82	45.6	92.8	91.7	43.8	73.8	0.149	0.106	
K2077-185			185			179													0.196	0.153
K2075-120	48	144	120	44	136	114	8.5	8.0	40	132		126	45.6	139.0	42.8	139.3	119.5	0.206	0.151	
K2075-145			145			139													0.239	0.184
*K2078-100	96	96	100	90	90	94	8.5	8.0	86	86.4		81.6	92.8	92.8	90.6	71.9	86.6	0.167	0.112	
K2078-130			130			124													0.203	0.148
PLASTIC CASES																				



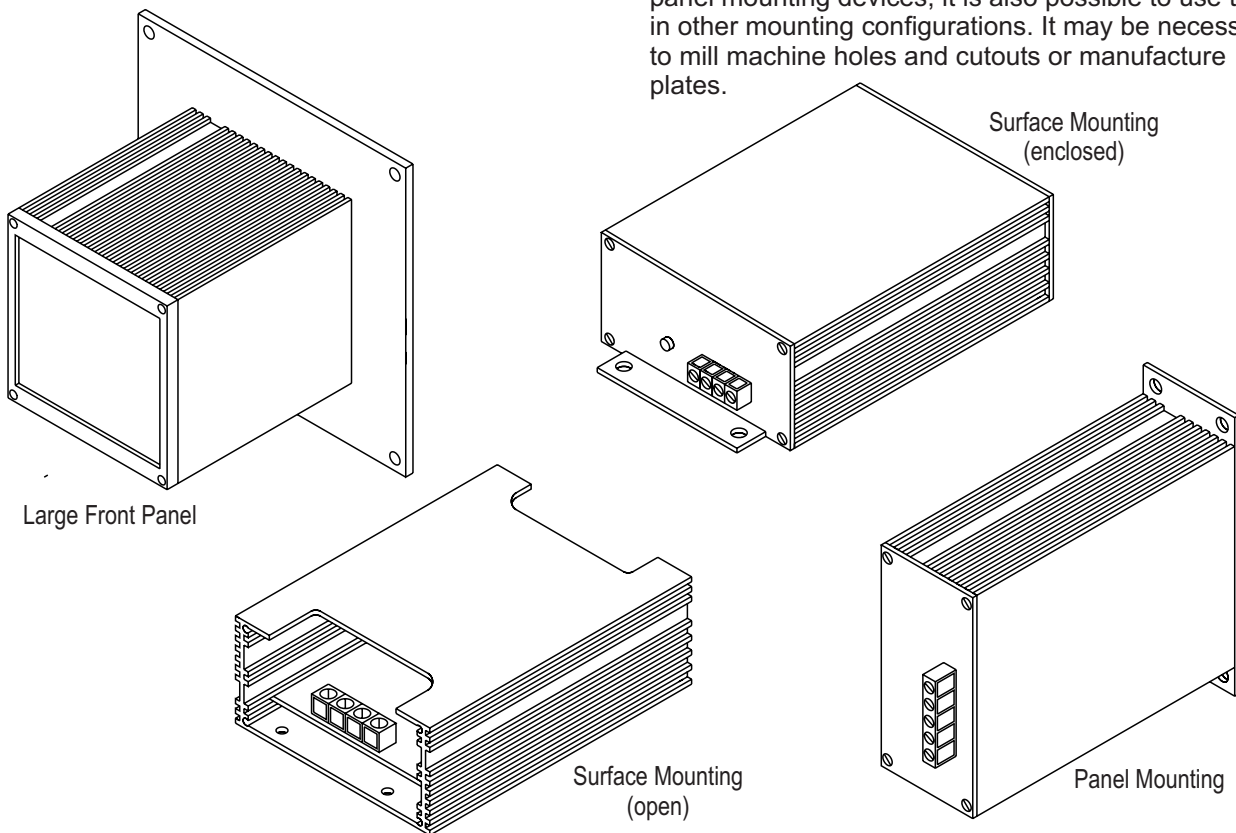
CONSTRUCTION



Standard cases are supplied with extrusion, front frame, rear frame, screws and holding brackets. Front and rear panels are optional.

ALTERNATIVE MOUNTING

Although the CAMA instrument cases are designed for panel mounting devices, it is also possible to use them in other mounting configurations. It may be necessary to mill machine holes and cutouts or manufacture plates.



Continuous development may necessitate changes in models and specifications without notice.

AUTOMATED MOTION SYSTEMS PTY.LTD.

MAILING ADDRESS:
 P.O. BOX 1240
 WANGARA DC
 W.A. 6947

PHONE: (08) 9309 1896
 FAX: (08) 9309 5671
 EMAIL: sales@automotsys.com.au
 INTERNET: <http://www.automotsys.com.au>

OFFICE ADDRESS:
 UNIT 2, 7 BARETTA RD.
 WANGARA, PERTH
 WESTERN AUSTRALIA