

# SG-P11-050-003-12-HH-712X-00000

## PLANETARY GEARBOXES

SG 050

$i=003$

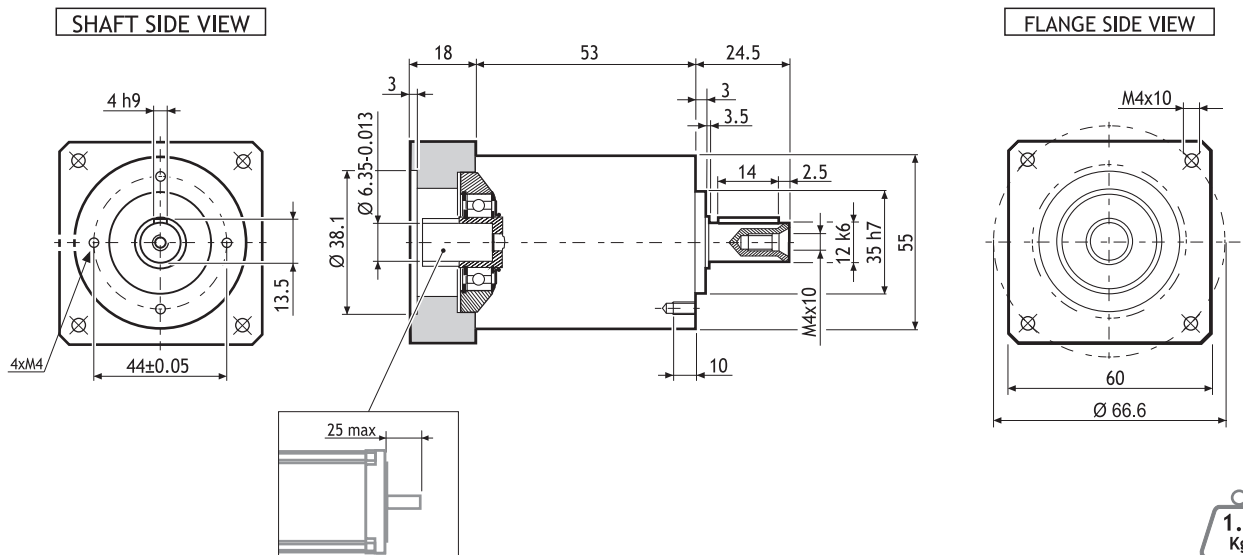
$\varphi=12'$

MADE IN ITALY

IP64

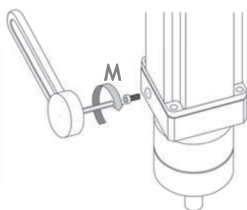


## Dimensions (Units:mm)

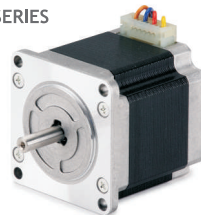


MODEL	Rated output torque [Nm]	Maximum acceleration output torque [Nm]	Emergency step output torque [Nm]	Backlash [arcmin]	Nominal input speed [min <sup>-1</sup> ]	Maximum momentary input speed [min <sup>-1</sup> ]	Torsional stiffness [Nm/arcmin]	Maximum radial force applying on output shaft [N]	Maximum axial force applying on output shaft [N]	Gear efficiency [%]	Gear moment of inertia [Kg·m <sup>2</sup> ]
SG-P11-050-003-12-HH-712X-00000	10	16	28	12'	3300	4000	0.9	500	600	97	0.07x10 <sup>-4</sup>

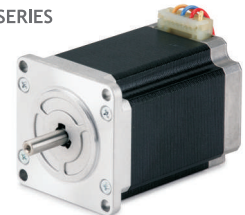
## Suggested motors



103-H7123 SERIES



103-H7126 SERIES



MOUNTING OPERATION MODE: ■ Tightening torque M=5 Nm ■ Locking bolt M4 ■ R.T.A. Quality Control