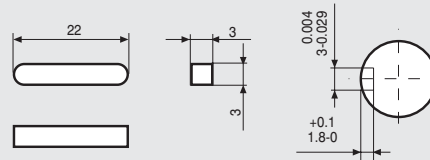


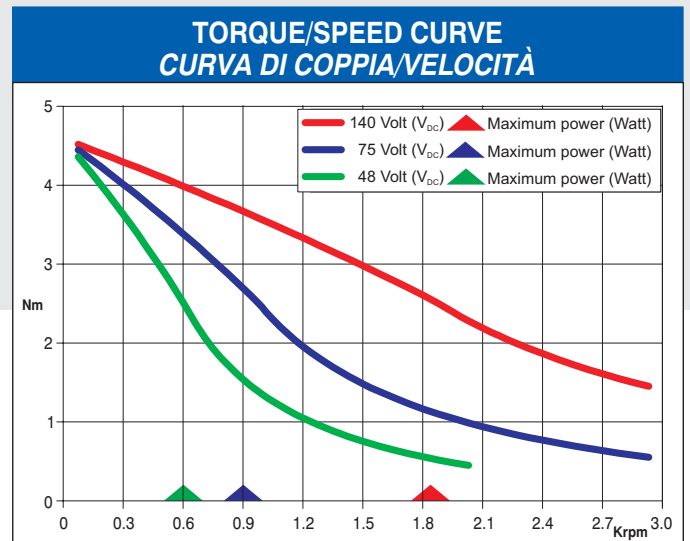
WIRES ARE HOUSED IN A VINYL TUBE.
T IS THE EARTH TERMINAL.



Dimensions in mm.

FEATURES CARATTERISTICHE		MODEL MODELLO	103 - 845 - 6741 (103 - 845 - 6711)
BASIC STEP ANGLE			1.8° ± 0.09°
BIPOLAR CURRENT	(Amp)		9.5 ^(*)
UNIPOLAR CURRENT	(Amp)		6.7
RESISTANCE	(Ohm)		0.45
INDUCTANCE	(mH)		2.0
BIPOLAR HOLDING TORQUE	(Ncm)		510
UNIPOLAR HOLDING TORQUE	(Ncm)		410
ROTOR INERTIA	(Kgm ² x 10 ⁻⁷)		1550
THEORETICAL ACCELERATION	(rad x sec. ⁻²)		32900
BACK E.M.F.	(V/Krpm)		46
MASS	(Kg)		3.6
PROTECTION DEGREE			IP43
LEADS CODE			II

Codes between brackets refer to double shaft models.
Le sigle fra parentesi si riferiscono ai modelli bialbero.



^(*) Bipolar parallel connection.
^(*) Collegamento bipolare parallelo.



Suggested R.T.A. driver: PLUS Series, contact R.T.A.