

PERMANENT MAGNET BRAKE

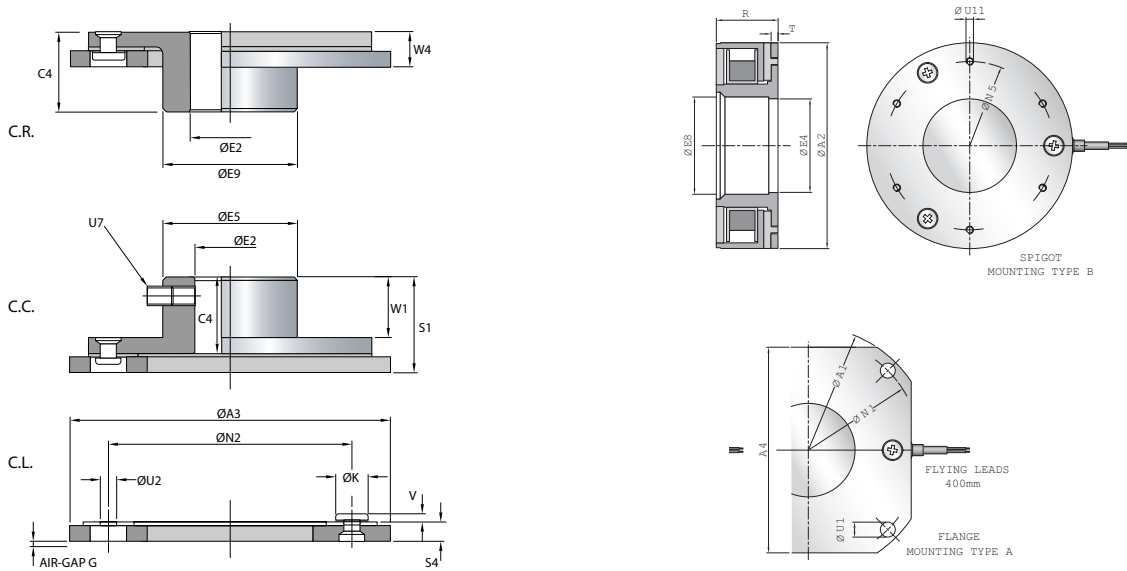
TYPE 62



SG Transmission

Electromagnetic Clutch & Brake Solutions

SG Transmission, 20 Longfield Road, South Church Enterprise Park, Bishop Auckland, County Durham, UK, DL14 6XB
Tel: +44 (0)1388 770 360 Fax: +44 (0)1388 779 197 sales@sgtransmission.com www.sgtransmission.com



These power-off devices are designed so that when the power is removed from the unit, the magnetic energy of a permanent magnetic disc is channelled and controlled to attract the steel armature plate across an air-gap. Therefore holding it in its place against the stationary field housing to give the required braking effect.

The armature plate is fixed in place to the rotating machine element. When power is returned to the brake coil the armature plate is released from the brake field allowing free movement of the rotating machine element.

Two types of permanent magnet brake are currently available from SG Transmission. They can be supplied as a flange mounted unit (A) or as a spigot-only design (B) depending upon the actual customer application.

SG Transmission brakes can be supplied, as standard with C.L., C.C. and C.R. armature types and feature bores and keys to suit specific requirements. Available in a range of voltages.

UL versions available on request.

STANDARD TYPE 62 BRAKES

Size	Torque TS (Nm)	Max P20 (w)	A1 (h9)	A2 (h8)	A3	A4 (AF)	C4	E2 max (H7)	E4 (H8)	E5	E8	E9	G	K	N1	N2	N5	R	S1	S4	T	U1	U2	U7	U11	V	W1	W4
03	0.4	6	38.5	28	28.5	30	7.8	8	16	17	9	-	0.15	4	33.5	19.5	22	16	10.5	2.7	1.5	2.6	2.15	M3	M2	1.6	5.3	-
04	1.25	8	62.5	40	40	45	14.2	8	13	16	13	12	0.15	6	54	29	32.5	21	17.5	3	3	3.5	3.2	M3	M2	1.5	12.2	5.3
05	2.5	12	75	53	56	56	17	15	24	24	24	23	0.20	6.5	61	46	48	20.8	20.5	3.4	3.3	4.5	3.1	M5	M3	1.5	13.5	7.0
06	9	20	80	63	63	66	15	17	35	27	32	27	0.20	6.5 8.0	72	46.0 50.0	49	26.6	19	4.1 3.8	3	4.5	3.1 4.1	M5	M4	1.5	11.5	7.5
07	5	20	90	70	73	70	20	20	30	30	32	30	0.25	8	79.5	60	61	25.3	24.2	4.2	3.5	5.5	4.1	M5	M3	1.5	15.0	9.2
09	12	18	115	85.5	90	90	25	30	40	40	43	40	0.25	10	102	76	75	26.6	30	5.0	3.5	6.5	5.1	M5	M3	2.0	20.0	10.0
11	30	22	132	110	110	110	30	35	50	49	52	49	0.30	13	121	95	90	33.0	36.2	6.2	3.75	6.5	6.1	M6	M4	4.7	24.0	12.2
12	60	28	150	126	126	128	30	40	62	57	62	49	0.40	12.5	137	95	106	37.8	37.2	7.1	5	6.6	6.1	M6	M6	3.2	20.0	13.0

* Available on request

See page two for special and multi pole versions.

ORDERING EXAMPLE



PERMANENT MAGNET BRAKE

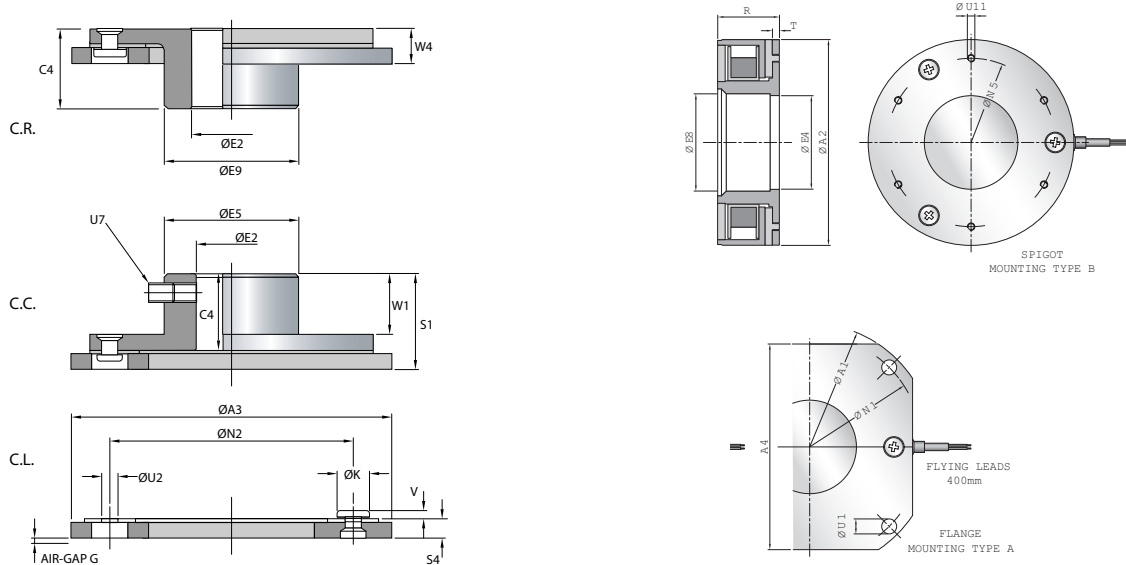
TYPE 62



SG Transmission

Electromagnetic Clutch & Brake Solutions

SG Transmission, 20 Longfield Road, South Church Enterprise Park, Bishop Auckland, County Durham, UK, DL14 6XB
Tel: +44 (0)1388 770 360 Fax: +44 (0)1388 779 197 sales@sgtransmission.com www.sgtransmission.com



SPECIAL TYPE 62 BRAKES

Size	Torque TS (Nm)	Max P20 (w)	A1 (h9)	A2 (h8)	A3	A4 (AF)	C4	E2 max (H7)	E4 (H8)	E5	E8	E9	G	K	N1	N2	N5	R	S1	S4	T	U1	U2	U7	U11	V	W1	W4
4 (HT)	2.2	8	62.5	40	45	*	*	13	*	13	*	0.15	6.5	54	29	*	23	*	5.05	2	3.5	3.2	*	*	1.5	*	*	
6 (HT)	12	20	88.9	66	67.7	66	*	35/34	27	35/34	*	0.2	8	79.4	46	56	27.6	18.5	3.9	3	4.5	3.1	M5	3xM4	1.5	11.1	*	
9 (HT)	22	18	115	*	90	90	*	40	*	43	*	0.25	10	102	76	*	26.6	*	5	3.5	6.5	5.1	*	*	2	*	*	
11 (HT)	40	22	*	104	110	*	30	35	50 (56)	49	56	49	0.3	13	*	95	90	30.7	*	5.8	6	*	6.3	*	6xM4	2	*	12
16	120	40	190	*	160	ROUND	*	*	68	*	63	*	0.4	13	175	120	*	41.2	*	9.4	10	6x6.4	8.3	*	*	6	*	*

MULTI POLE TYPE 62 BRAKES

Size	Torque TS (Nm)	Max P20 (w)	A1 (h9)	A2 (h8)	A3	A4 (AF)	C4	E2 max (H7)	E4 (H8)	E5	E8	E9	G	K	N1	N2	N5	R	S1	S4	T	U1	U2	U7	U11	V	W1	W4
08	18	24	100	80	80.2	80	20	22	35/42	38	38	32	0.25	8	90	60	63	29.9	24.7	4.7	3	5.5	4.1	M5	M4	1.5	16	8.7
09	22	18	115	*	90	90	*	*	40	*	43	*	0.25	10	102	76	*	26.7	*	5	3	6.5	5.2	*	*	2	*	*
10	35	22	*	100	100	*	*	*	52	*	52	*	0.3	10	*	78	76	37.5	*	5.8	5	*	5.1	*	M5	2	*	*
11	40	24	*	104(h9)	109.6	*	*	*	56	*	58.5	*	0.3	12.8	*	95	90	30.7	*	5.8	6	*	6.4	*	M4	4.7	*	*

* Available on request

ORDERING EXAMPLE

