

CLUTCH - SLEEVE BEARING MOUNTED

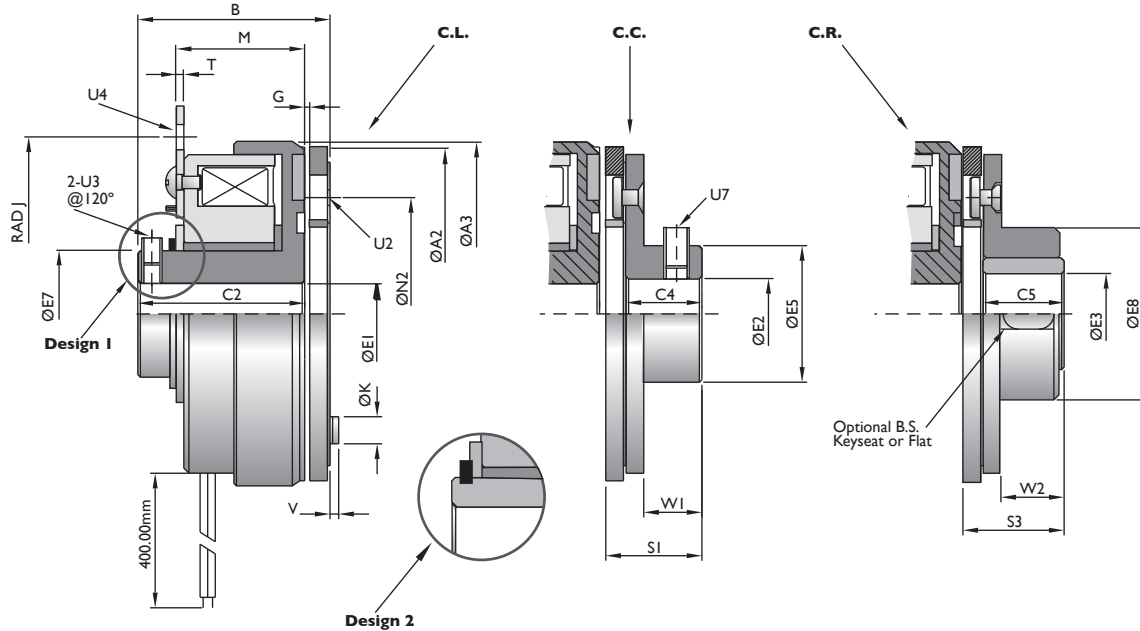
TYPE 51



SG Transmission

Electromagnetic Clutch & Brake Solutions

SG Transmission, 20 Longfield Road, South Church Enterprise Park, Bishop Auckland, County Durham, UK, DL14 6XB
Tel: +44 (0)1388 770 360 Fax: +44 (0)1388 779 197 sales@sgtransmission.com www.sgtransmission.com



Size	Torque TS (Nm)	Max P20 (w)	A2	A3	B	C2	C4	C5	H7		E3	E5	E7	E8 h7	G	J	K	M	N2	S1	S3	T	U2	U3	U4	U7	V	W1	W2	Design	
									Max E1	Max E2																				1	2
01	0.60	6	30	31	24	22	10	10	6	6.5	6	12	16	12.7	0.1	15.5	5	16	19.5	12.8	12.5	1.5	2x2.6	M3	HOLE 4x3.2	M3	1	8	7.5	•	
02	0.75	6	32	34	29	26	10	10	6	6.5	6	12	16	14	0.1	20	5	22	23	12.8	12.5	1.5	3x2.6	M3	SLOT 3.10	M3	1.5	8	7.5	•	
03	1.20	8	40	43	34	30.5	12	12	10	10	10	17	17	18	0.15	23	6.1	25	30	15.3	15	1.5	3x3.1	M3	SLOT 3.20	M3	1.5	9.5	9	•	
04	1.60	8	42	44	34	30.5	12	12	10	10	10	17	16	20	0.15	30	6.1	25	29	15.3	15	1.5	2x3.1	M3	SLOT 3.10	M3	1.5	9.5	9	•	
05	3	10	50	54	37.5	34	12	12	15	15	15	24	20	28	0.2	28	6.1	28	38	15.3	15	1.5	3x3.1	M4	SLOT 5.10	M4	1.5	9.5	9	•	
06	8	12	66.5	68	32	28	15	16	17	17	20	27	25	34	0.2	36	6.1	25.4	46	19	19	1.5	3x3.1	-	SLOT 5.10	M5	1.5	11.5	11.5		•
07	8	12	66.5	68	40	36	15	16	17	17	20	27	25	35	0.2	40	6.1	27.5	46	19	19	1.5	3x3.1	M5	HOLE 5.10	M5	1.5	11.5	11.5	•	
08	16	18	80	85	36	31	20	20	20	20	25	32	35	48	0.2	45	8	27.8	60	24.7	24	1.5	3x4.1	-	SLOT 5.00	M5	2	16	15		•

Keyways to B.S. 4235 • Insulation Class B

SIZE FIELD MOUNTING ARMATURE TYPE ARMATURE BORE ROTOR BORE D.C. VOLTAGE

05 - CLUTCH - S.B. - C.C. - 10 - 12 - 24
Voltages 12 or 24v. DC